

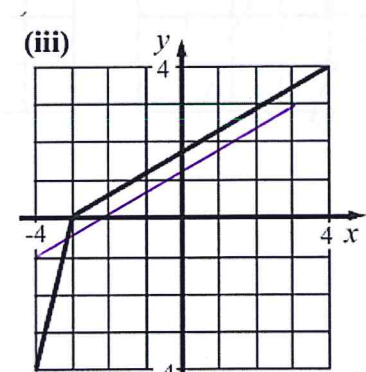
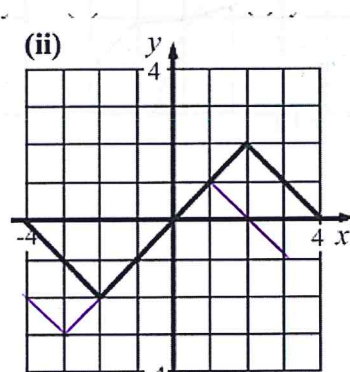
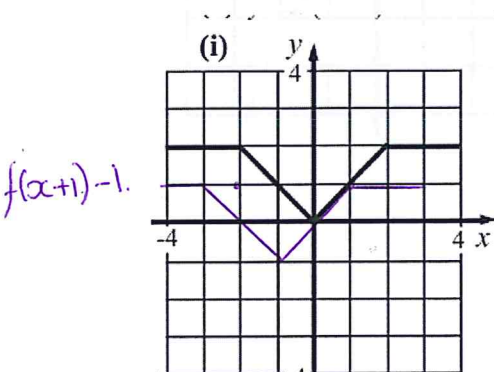
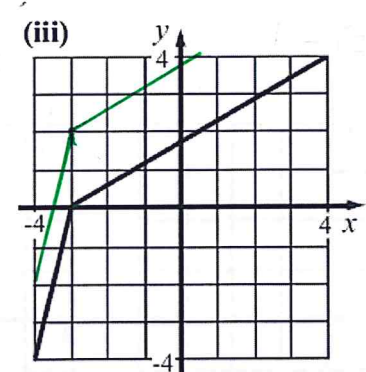
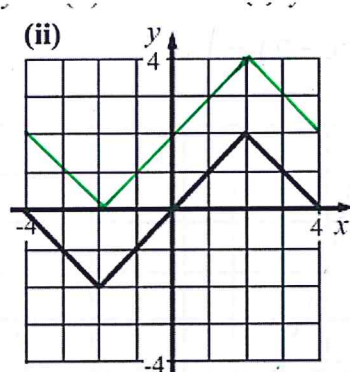
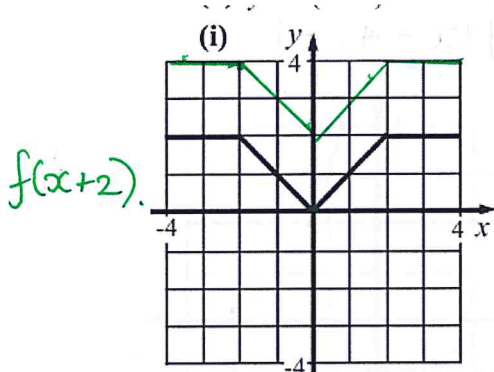
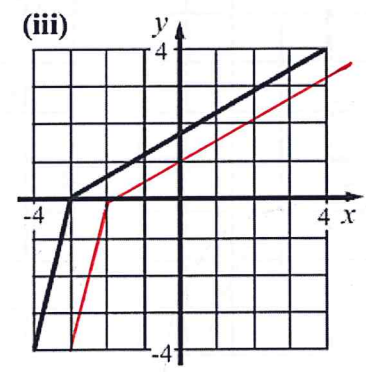
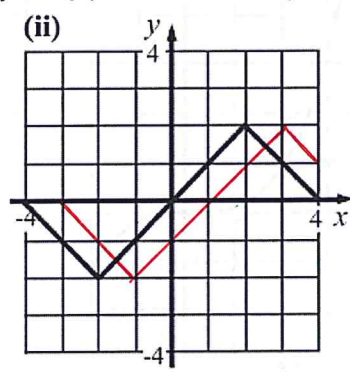
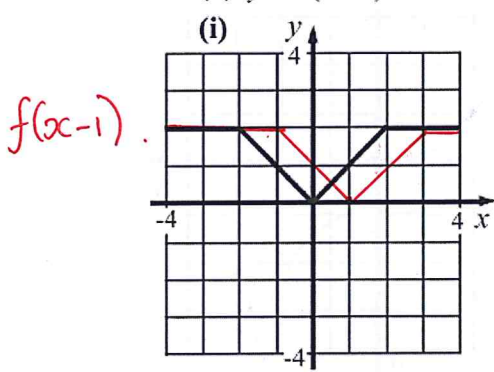
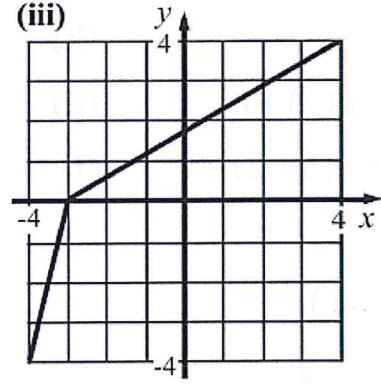
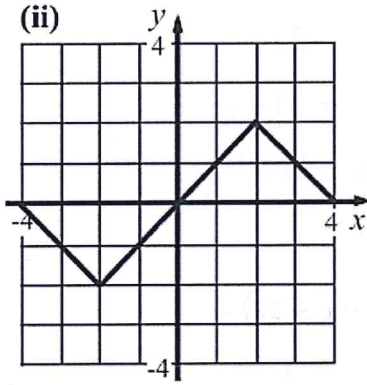
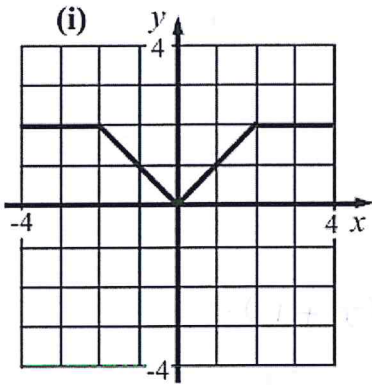
Transforming Graphs (Translations)

For each of the graphs below, use squared paper to draw graphs of,

(a) $y = f(x-1)$

(b) $y = f(x)+2$

(c) $y = f(x+1)-1$



The graph shows the curve $y = f(x)$.

Use squared paper (and tracing paper) to sketch the following curves.

(a) $y = f(x-1)$

(b) $y = f(x-2)$

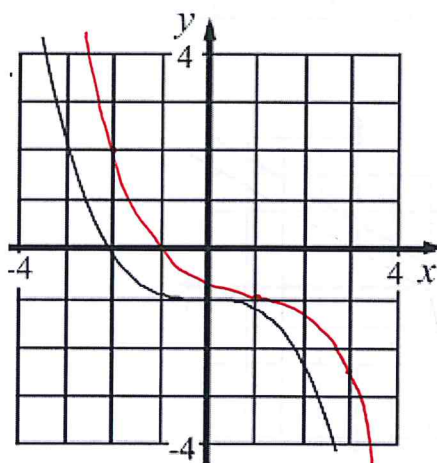
(c) $y = f(x)+1$

(d) $y = f(x+2)-1$

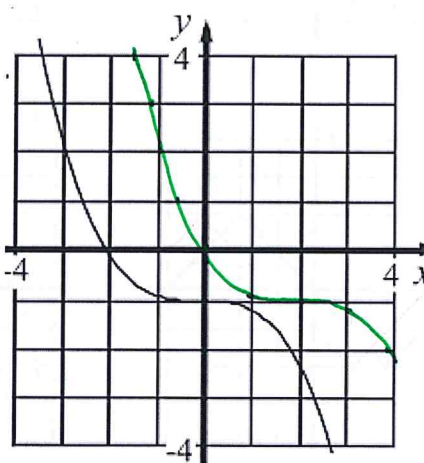
(e) $y = f(x-2)-1$

(f) $y = f(x-4)+1$

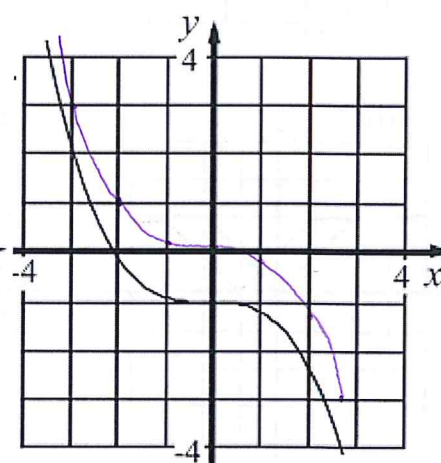
$f(x-1)$.



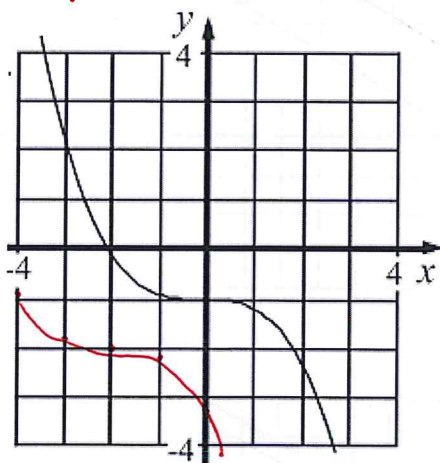
$f(x-2)$.



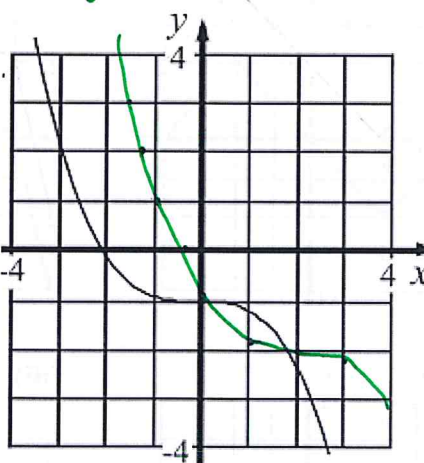
$f(x+1)$.



$f(x+2)-1$.



$f(x-2)-1$.



$f(x-4)+1$.

