

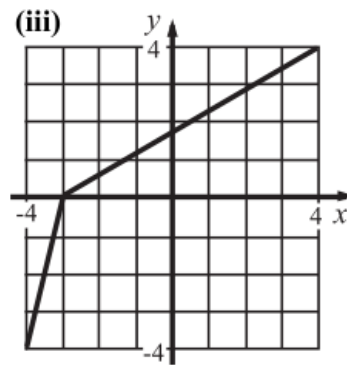
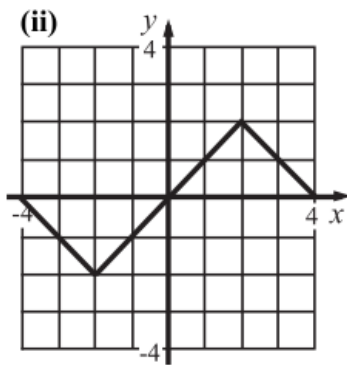
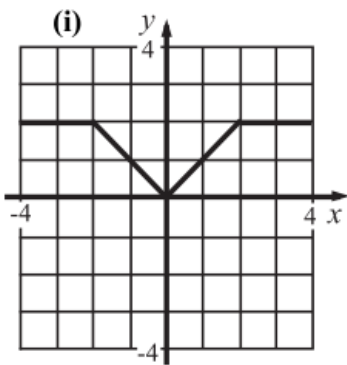
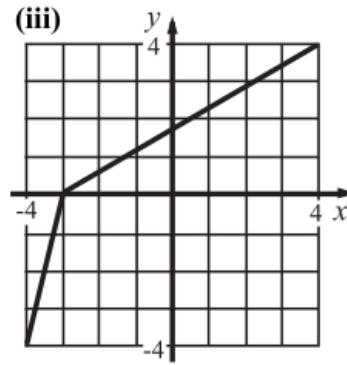
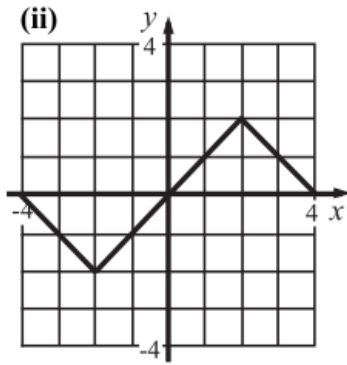
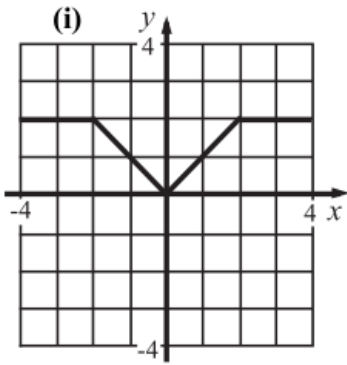
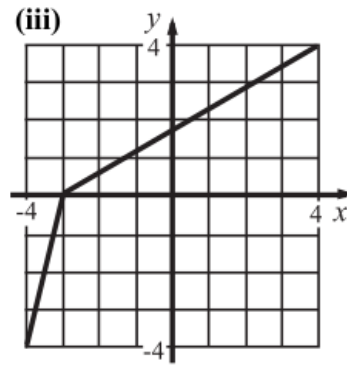
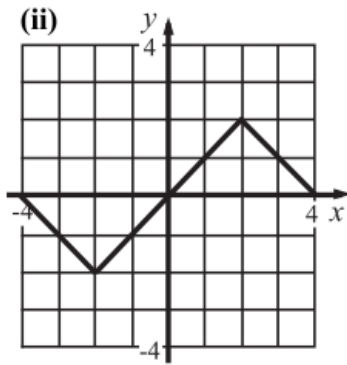
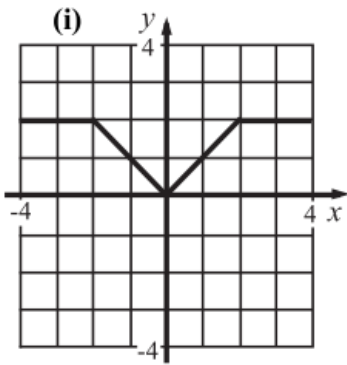
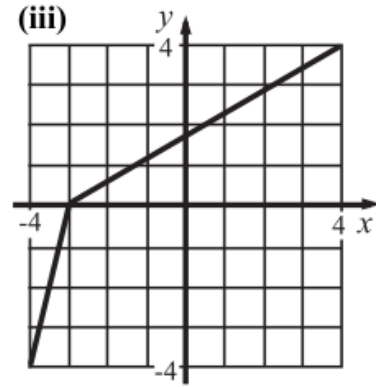
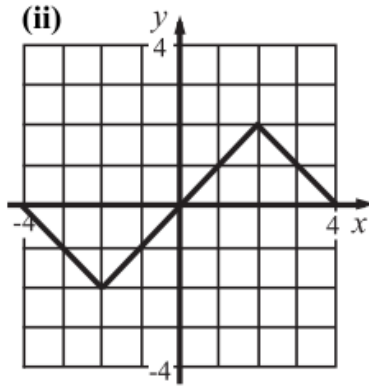
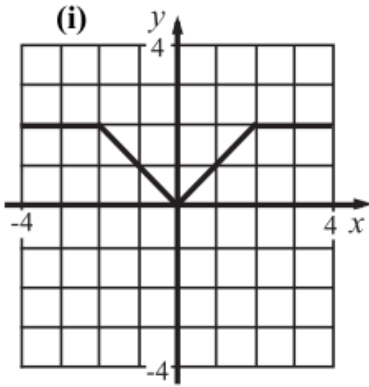
Transforming Graphs (Translations)

For each of the graphs below, use squared paper to draw graphs of,

(a) $y = f(x-1)$

(b) $y = f(x)+2$

(c) $y = f(x+1)-1$



The graph shows the curve $y = f(x)$.

Use squared paper (and tracing paper) to sketch the following curves.

(a) $y = f(x-1)$

(b) $y = f(x-2)$

(c) $y = f(x)+1$

(d) $y = f(x+2)-1$

(e) $y = f(x-2)-1$

(f) $y = f(x-4)+1$

